

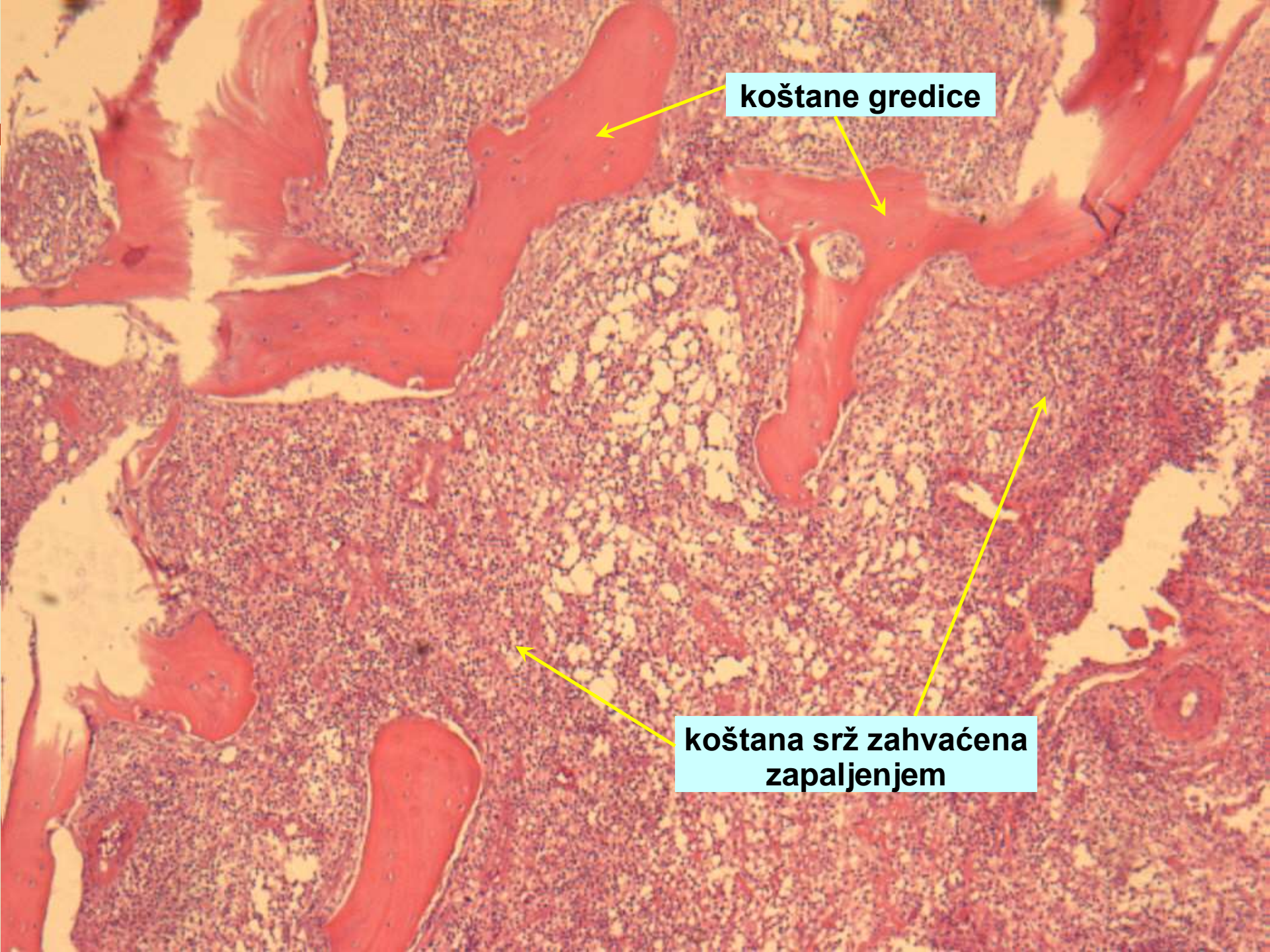


PATOLOGIJA KOSTI

Dr sci. med. Mirjana Miladinović



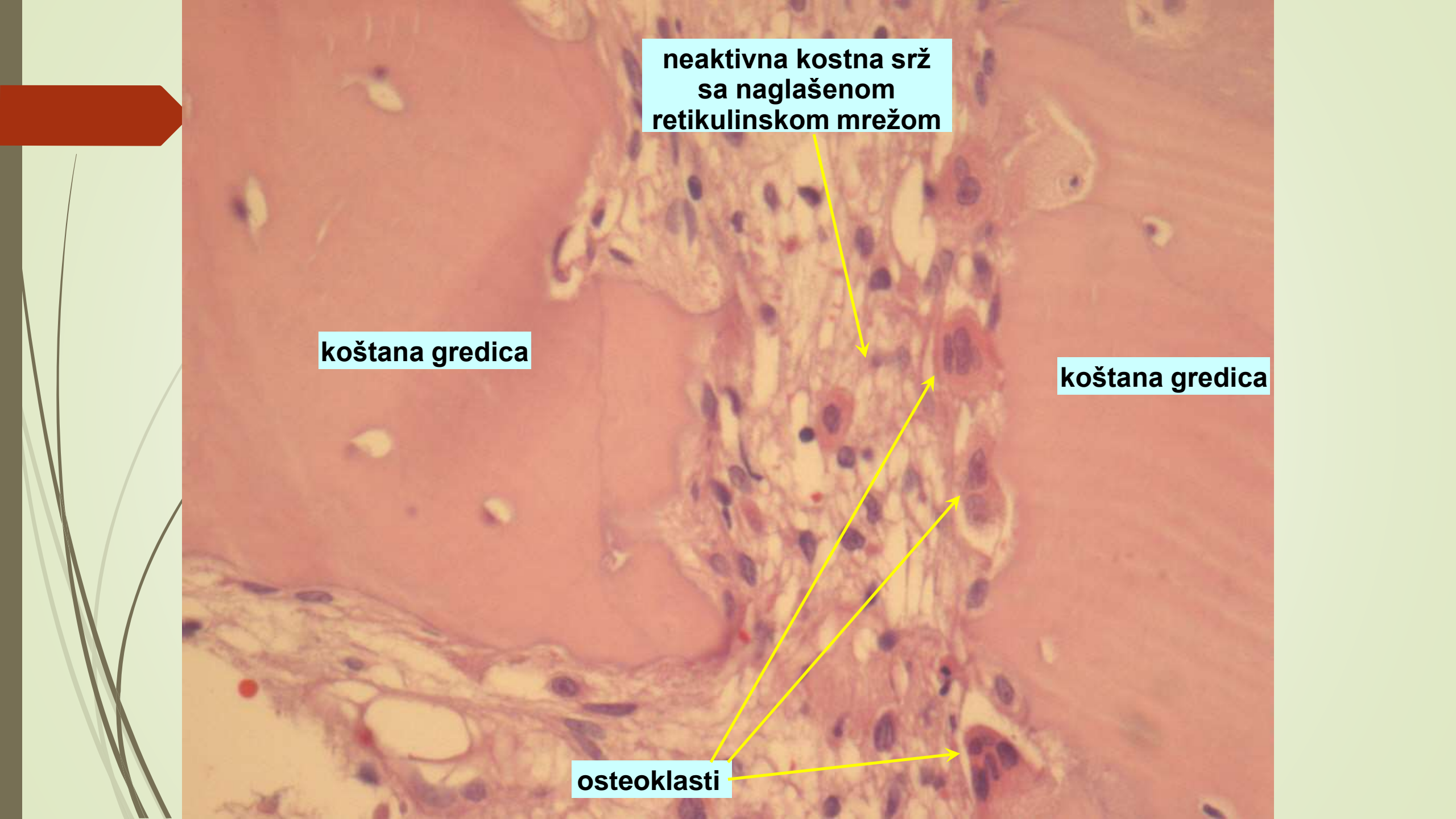
OSTEOMYELITIS PURULENTA ACUTA



koštane gredice

This is a histological micrograph of bone tissue. The image shows several red-stained trabeculae (koštane gredice) of varying thickness and shape, which are remnants of the bony framework. The spaces between these trabeculae are filled with a dense, purple-stained cellular material representing the bone marrow (koštana srž). The marrow appears inflamed (zahvaćena zapaljenjem), characterized by a high density of small, dark-staining cells, likely leukocytes, and a loss of the normal architecture. Yellow arrows point from the text labels to the corresponding structures in the image.

koštana srž zahvaćena
zapaljenjem



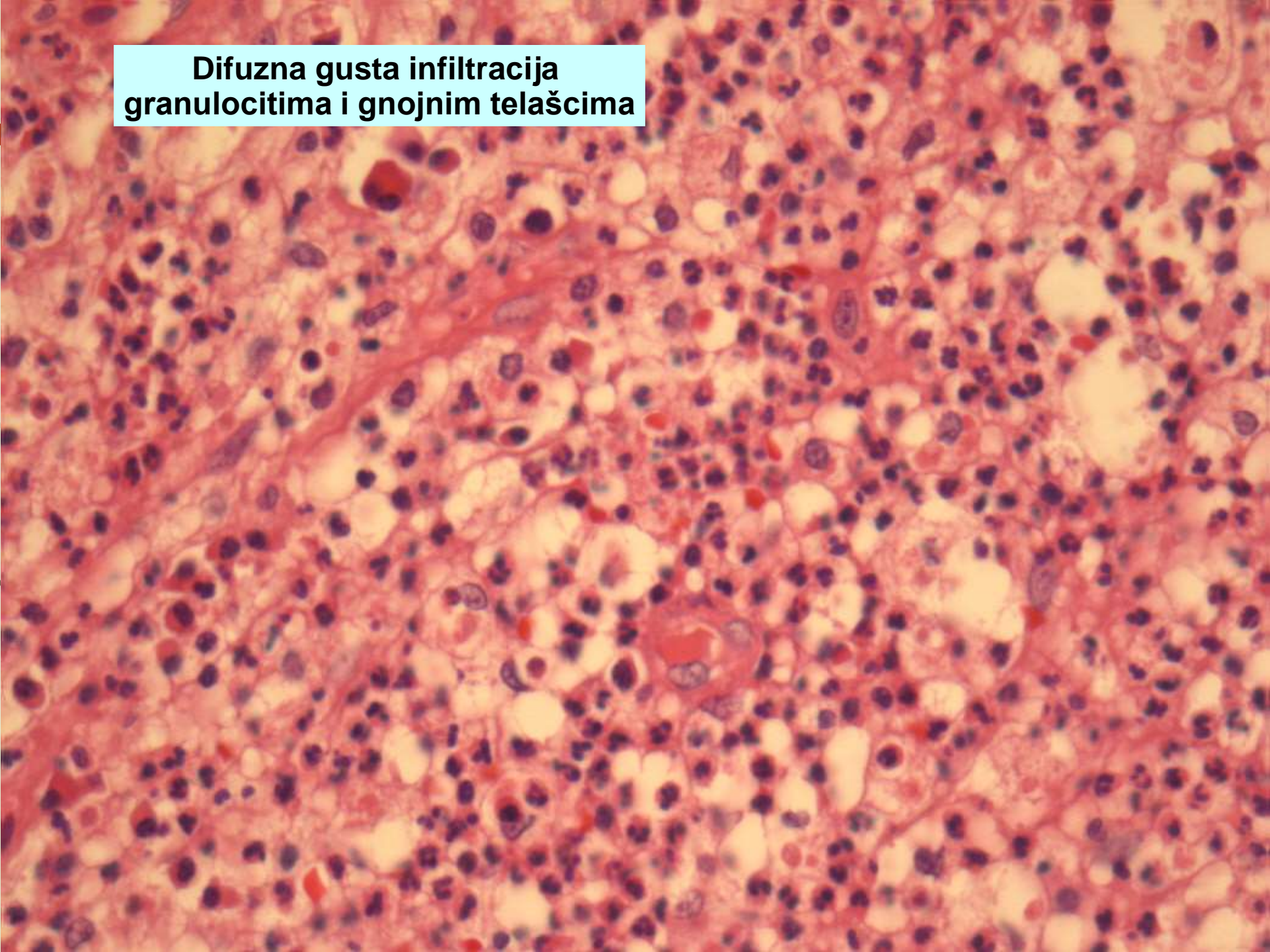
neaktivna kostna srž
sa naglašeno
retikulinskom mrežom

koštana gredica

koštana gredica

osteoklasti

**Difuzna gusta infiltracija
granulocitima i gnojnim telašcima**





Osteoma

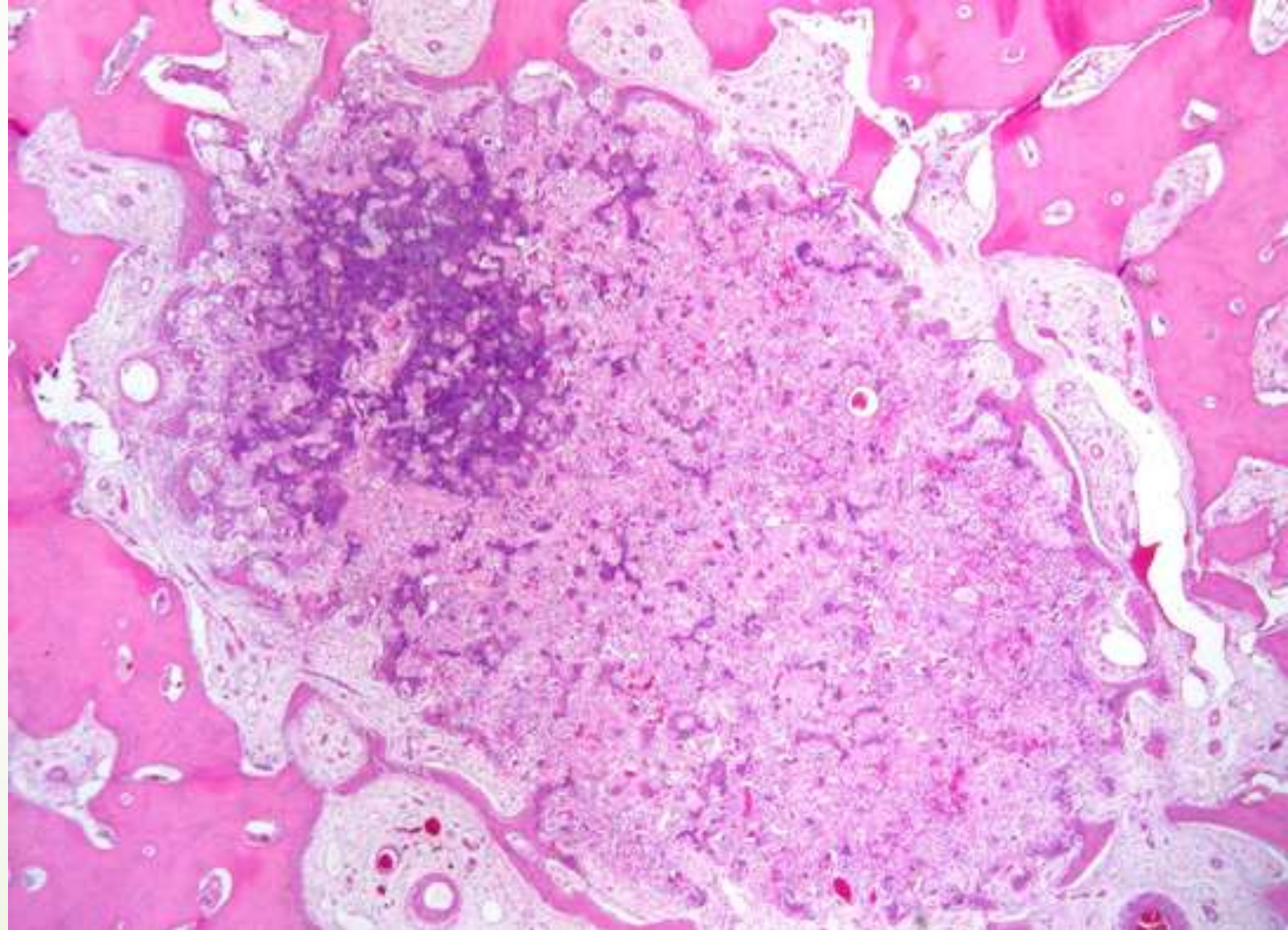
Kosti lobanje, paranazalnih sinusa

Zrelo koštano tkivo, dominantno lamelarne građe



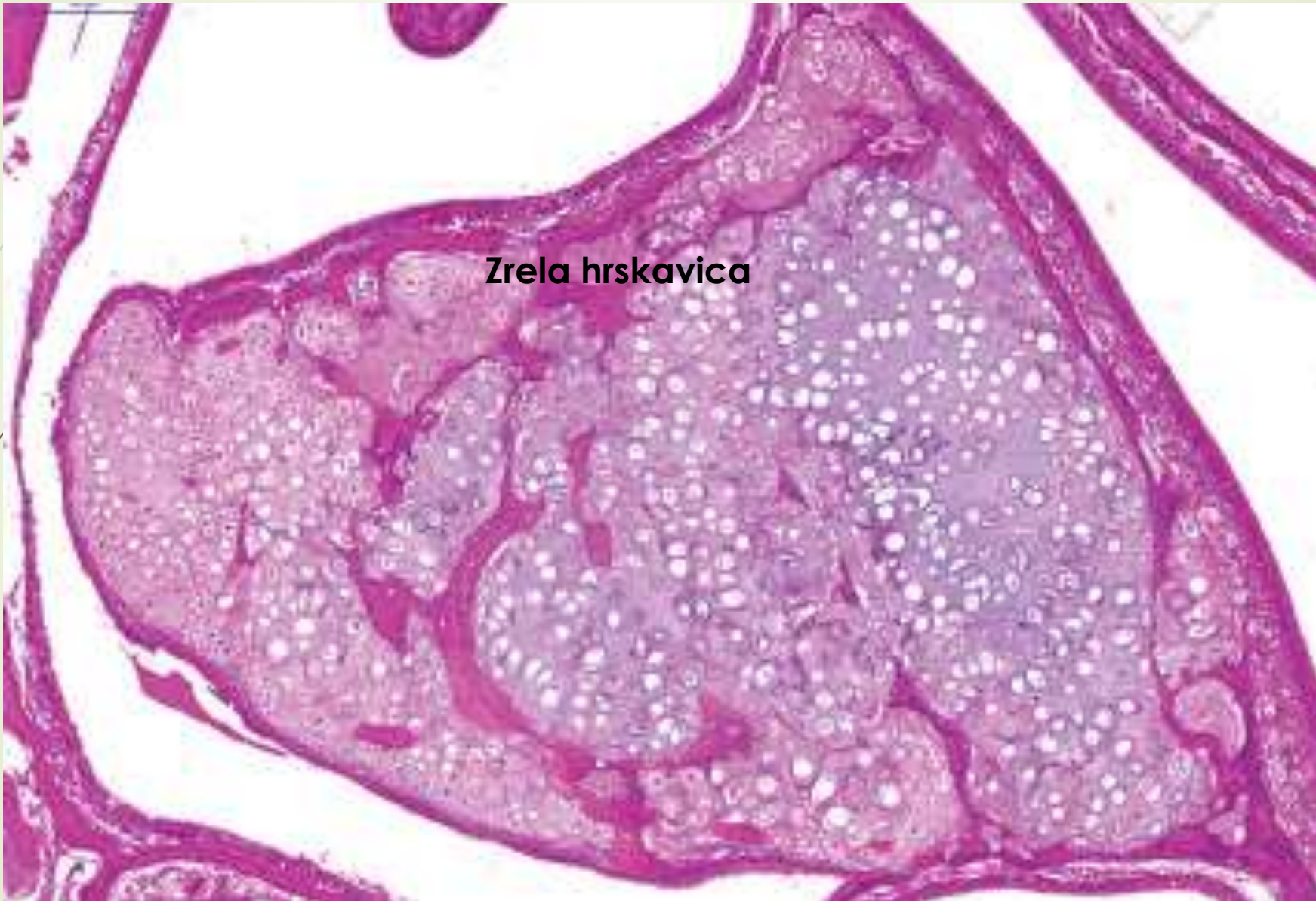
Osteoid osteoma

- ▶ Celularno vezivno tkivo
- ▶ Dosta krvnih sudova
- ▶ Osteoidno tkivo
- ▶ Nezrela kost





Chondroma



Zrela hrskavica



Osteosarcoma

